

ENSTALL

Connect



Expand, click and you're done

Connect offers the fastest installation on the market. Almost all parts are delivered pre-assembled. This means you only need one type of base element on the roof.

Maximum flexibility

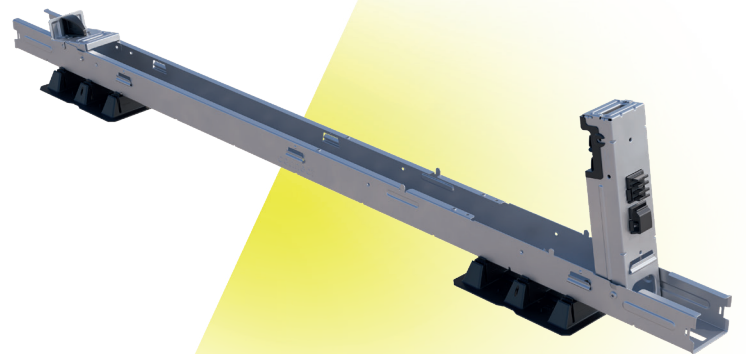
You can create any setup with one type of element. You can choose the distance and position of the walkway with different connectors. You also have the option of using ballast or anchoring.

Cable management solutions

With the clever cable guides in the high base and the option to attach cable trays to the system, you can hide all cables quickly and safely.

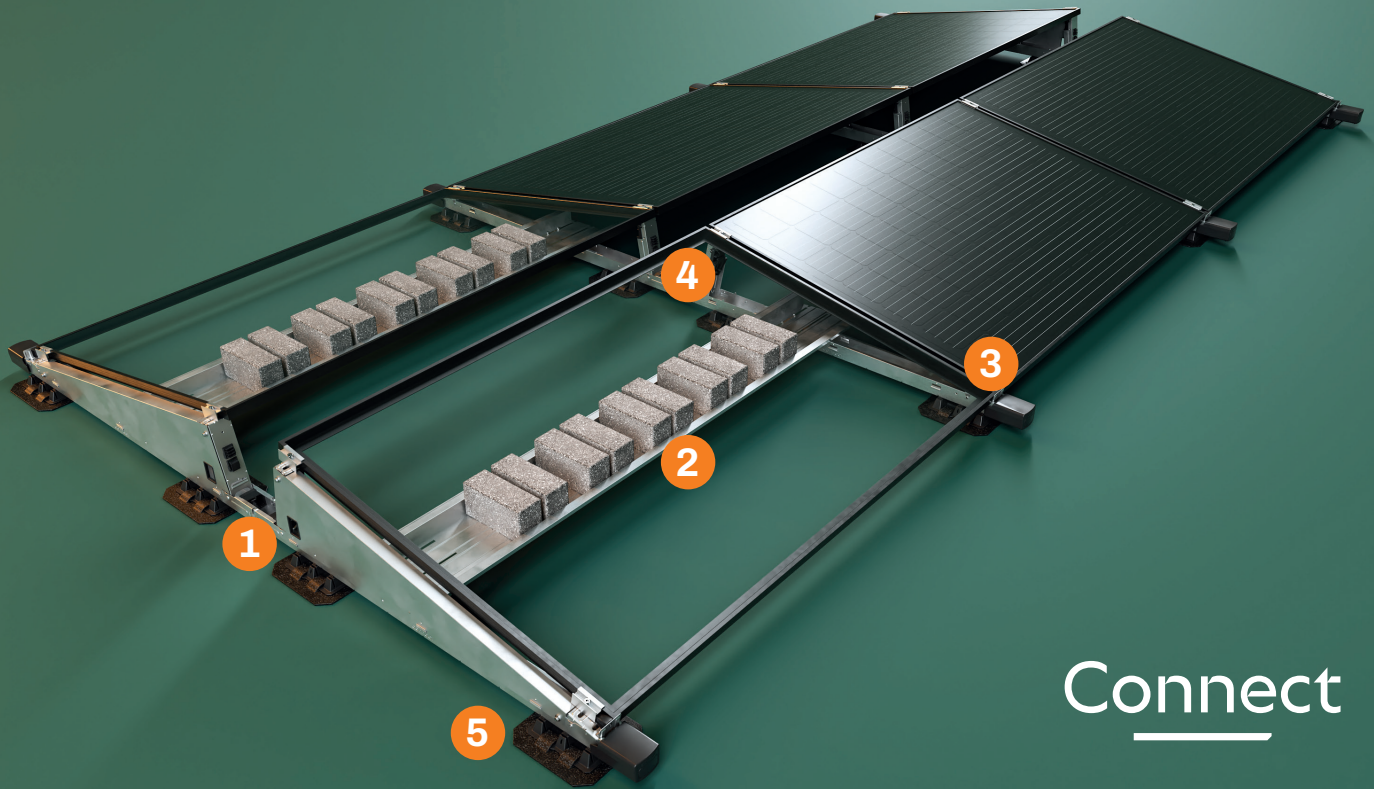
Why Connect?

- ✓ A maximum of 5 different components
- ✓ Base elements are recyclable and UV-resistant
- ✓ Wide applicability for any set-up and any surface
- ✓ Efficient and economical
- ✓ Suitable for both dual or single and portrait or landscape setups

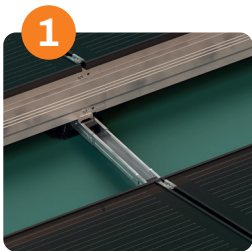


Want to know more about Connect? Go to enstall.com

The pre-assembled click-and-go system

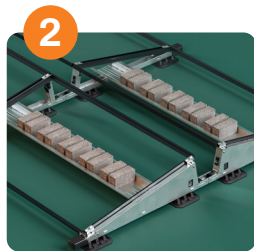


Connect



1 Various connectors

Decide for yourself the distance and position of the walkways.



2 Ballasting or anchoring

It is possible to ballast or anchor your installation, or a combination of both.



3 Cable tray attachment

With the various options for attaching a cable tray, you can always neatly route the cables of your installation.



4 Integrated cable management

With the clever cable guides in the high base and the profile, you can quickly and safely hide all cables.



5 Situation-specific articles

Always the best solution for your project with optional accessories, such as the extension block for roofs covered with gravel.

MyEnstall: access to all our digital services with just one account

We support you every step of the way, from planning to project completion and everything in between. Want to know more?

Scan the QR code and create an account or go to my.enstall.com



Calculator



OnSite App



Enstall Academy